

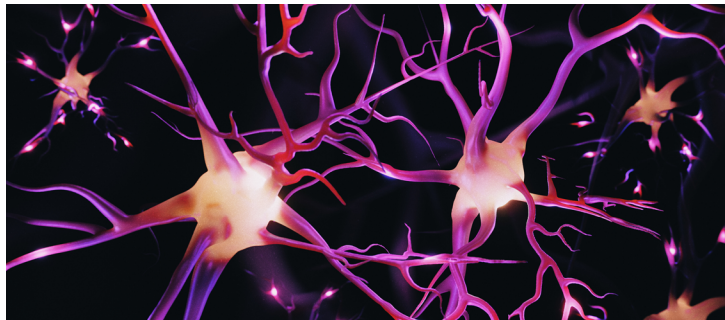
Areas of Focus

Although all requests are internally reviewed and considered, Roche Canada places considerable importance on requests within our corporate and/or therapeutic areas of interest including, but not limited to:



Ophthalmology

*Neovascular Macular Degeneration,
Diabetic Macular Edema, Retinal Vein Occlusion*



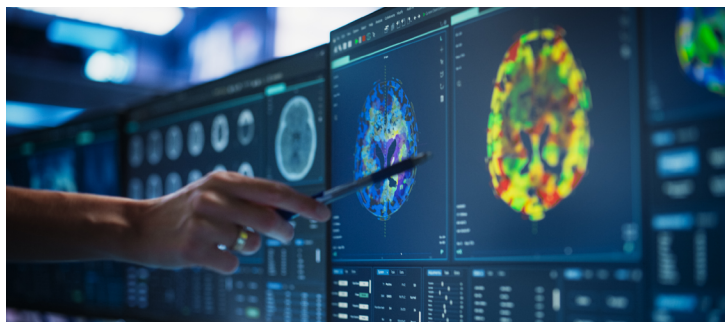
Neuroimmunology

Multiple Sclerosis



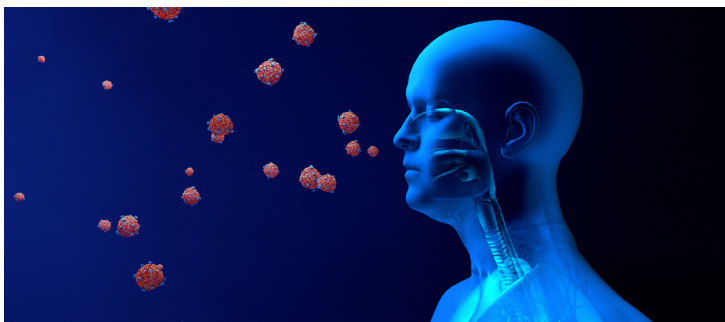
Rare Diseases

Spinal Muscular Atrophy, Hemophilia



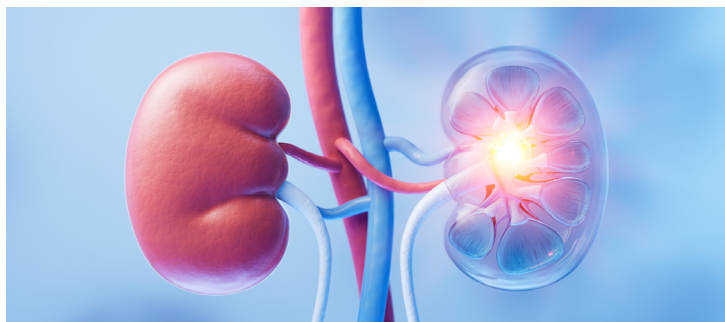
Oncology

Breast, Lung, Hematology, Gastrointestinal



Immunology and Respiriology

Lupus Nephritis



Cardiovascular, Renal and Metabolism

Obesity, Diabetes, Chronic Kidney Disease

Roche will also prioritize requests with broader health care implications including, but not limited to, real-world evidence, artificial intelligence, patient and medication access.