

Roche Canada Funding Resource

Before starting the online application process, we encourage you to read through this guide for information to assist in the completion and submission of your funding application.

Eligibility

Eligible Organizations

The following applicants are eligible to apply for Roche's funding opportunities:

For Grants and Sponsorships:

- **Canadian** Healthcare Organization (HCOs)
- **Canadian** Healthcare Entities (HCEs)
- **Canadian** Patient Organizations and Patient Advocacy Groups (PAGs)
- **Canadian** Academic Institutions (Departments, Divisions, Faculties)
- Other **Canadian** stakeholders across the healthcare ecosystem
 - » **Canadian** Industry/ Life Sciences Associations
 - » **Canadian** Trade Associations
 - » **Canadian** AI and Digital Health Organizations
 - » **Canadian** Policy/ Health Policy Expert Groups
 - » **Canadian** Research Facilities / Think Tanks



For Philanthropic Donations:

- **Canadian** philanthropic organizations (charities or not-for-profits) with a Canada Revenue Agency (CRA) charitable number

Note: Grants, sponsorships and philanthropic donations may only be awarded to eligible entities. They cannot be provided to an individual stakeholder, an entity controlled by an individual stakeholder or its family member, legal representative, or agent.

For International Conference Support:

- **Canadian** Healthcare Professionals (HCPs)
 - » Note: Canadian HCPs with an active US medical license are ineligible for support, even if they work in Canada
- **Canadian** HCOs or HCEs on behalf of a Canadian HCP

Funding Opportunities Available

Roche Canada currently welcomes applications for the following types of funding requests:



1. Sponsorships: Provisions of funding or in-kind contributions, in response to a solicited or unsolicited request to support bona-fide scientific, medical, health care-related or other activities (undertaken for education, informational, research or related purposes), where Roche may control, influence or participate in the design or conduct of the activity or acquire a tangible benefit. Benefits may include: entry tickets, booth or floor space, prominent print or online corporate logo placement, as well as the opportunity to build corporate reputation and recognition for Roche.

2. Grants: Provisions of funding, in response to an unsolicited request to support independent bona-fide scientific, medical, or health care-related activities (undertaken for educational, informational or research purposes), where Roche does not control, influence or participate in the design or conduct of the activity or acquire a tangible benefit from the funding.

Note: A mere display of Roche's logo or name is not considered a tangible benefit.

3. International Conference Support (ICS): Provisions of funding, in response to an unsolicited request to support healthcare professionals (HCPs) or academic societies/professional associations/organizations representing HCPs with financial assistance to participate in international events. The purpose is to ensure Canadian HCPs are educated and kept informed on developments in health research, health sciences, clinical practice and their profession at the international level, enabling improvements in health care for Canadian patients.

Note: Roche provides funding in the form of a taxable stipend to help offset costs associated with attending prioritized international events including AAO, Hawaiian Eye & Retina Meeting, EAHAD, ACTRIMS, MDA, SMA Europe, WFH, CMSC, Annual CureSMA Conference, ISTH, ASRS, EURETINA, AAN, and ECTRIMS.

4. Philanthropic Donations: Provisions of funding or in-kind contributions, in response to solicited or unsolicited requests to support health care in general, local communities or other charitable and philanthropic activities that have no link to Roche research, development, or commercial activities and are therefore not aligned with one or more of [Roche's Focus Areas](#). Roche does not control or influence the support provided or acquire a tangible benefit.

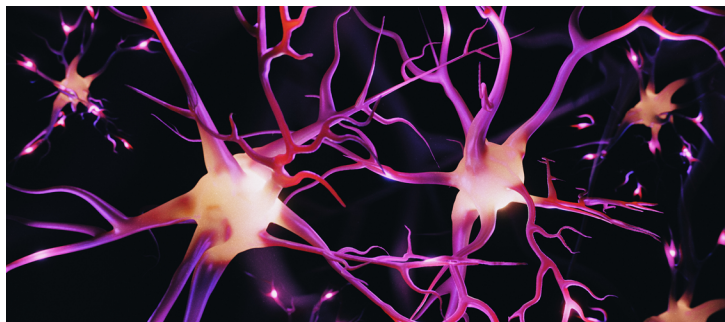
Areas of Focus

Although all requests are internally reviewed and considered, Roche Canada places considerable importance on requests within our corporate and/or therapeutic areas of interest including, but not limited to:



Ophthalmology

*Neovascular Macular Degeneration,
Diabetic Macular Edema, Retinal Vein Occlusion*



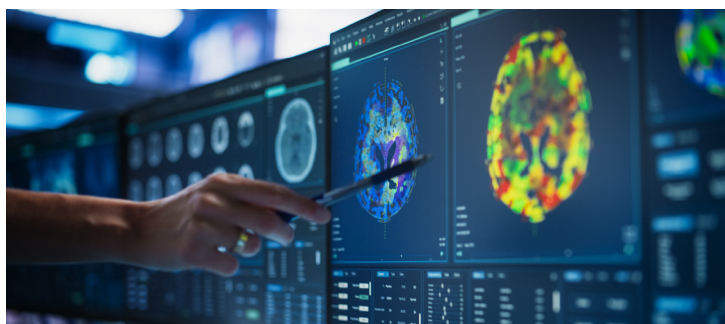
Neuroimmunology

Multiple Sclerosis



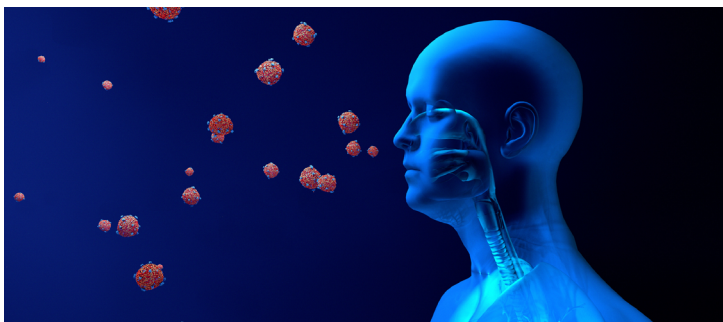
Rare Diseases

Spinal Muscular Atrophy, Hemophilia



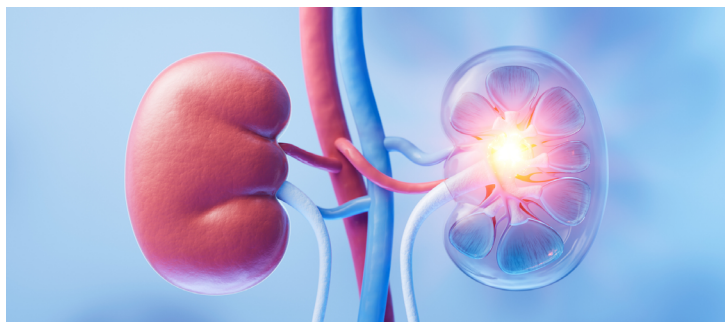
Oncology

Breast, Lung, Hematology, Gastrointestinal



Immunology and Respiriology

Lupus Nephritis



Cardiovascular, Renal and Metabolism

Obesity, Diabetes, Chronic Kidney Disease

Roche will also prioritize requests with broader health care implications including, but not limited to, real-world evidence, artificial intelligence, patient and medication access.

Required Information & Documentation



All applications must be submitted through the [Funding Request Tool](#) for funding consideration. Applicants must fill in all required fields as accurately and in as much detail as possible. Applications with incomplete or missing information will result in processing delays and/or your request will not be considered for funding.

All requests must include the following information:

- Detailed description, rationale and objectives
- Target audience and audience size
- Initiative start and end dates
 - » **Note:** *funding can only be provided for a reasonable and defined period of time and cannot be indefinite or self-renewing*
- Amount you are requesting from Roche
- A detailed budget itemizing the costs for the initiative
- Confirmation of whether or not you have approached or received funding from other companies for the same initiative or project

Depending on the type of funding you are requesting or the type of initiative, you will also need to provide the following:

- For all **activities/events**, attach an agenda/draft agenda and identify the venue (if applicable)
- For **sponsorships**, identify the tangible benefits being offered with the requested amount
- For **research grants**, attach a project proposal inclusive of a project schedule/timeline
- For **memberships**, provide a detailed budget of how membership dues are used

Timelines



Applications for sponsorships, grants and philanthropic donations can be submitted online 24 hours a day, 7 days a week. Roche Canada recommends that you submit your application well before your initiative's start date - **at least 60 days in advance** - to provide sufficient time for evaluation and processing.

Applications for international conference support (ICS) must be submitted **at least 45 days prior to the conference start date**. ICS applications received after this threshold will not be considered for funding.

Note: All contracting must be in place before the initiative begins.

The processing time for a funding application can vary depending on different factors, including but not limited to the type of funding, the application's level of completion and detail, and the complexity of the request.

At any time, requestors can log in to their account to review the status of their request.

If you require this information in an accessible format, please contact Roche at 1-800-561-1759.